

# Village of Rustburg Rt 24/US 501 Corridor Improvement Study



A planning study is being conducted for Route 24 (Village Highway) in Rustburg. The study area is between Brookneal Highway on the west and Red House Road on the east, as shown in the map on the next page. The study will identify needed improvements and enhancements.

We want your concerns, thoughts, and ideas about the corridor as local business owners. Please join the planning process by completing the survey at the link below. The survey can also be reached via the QR code to the right.

For more info, visit the project website at the link below or the QR code to the right.

Survey:

<http://route24corridorsurvey.metroquest.com/>

Website:

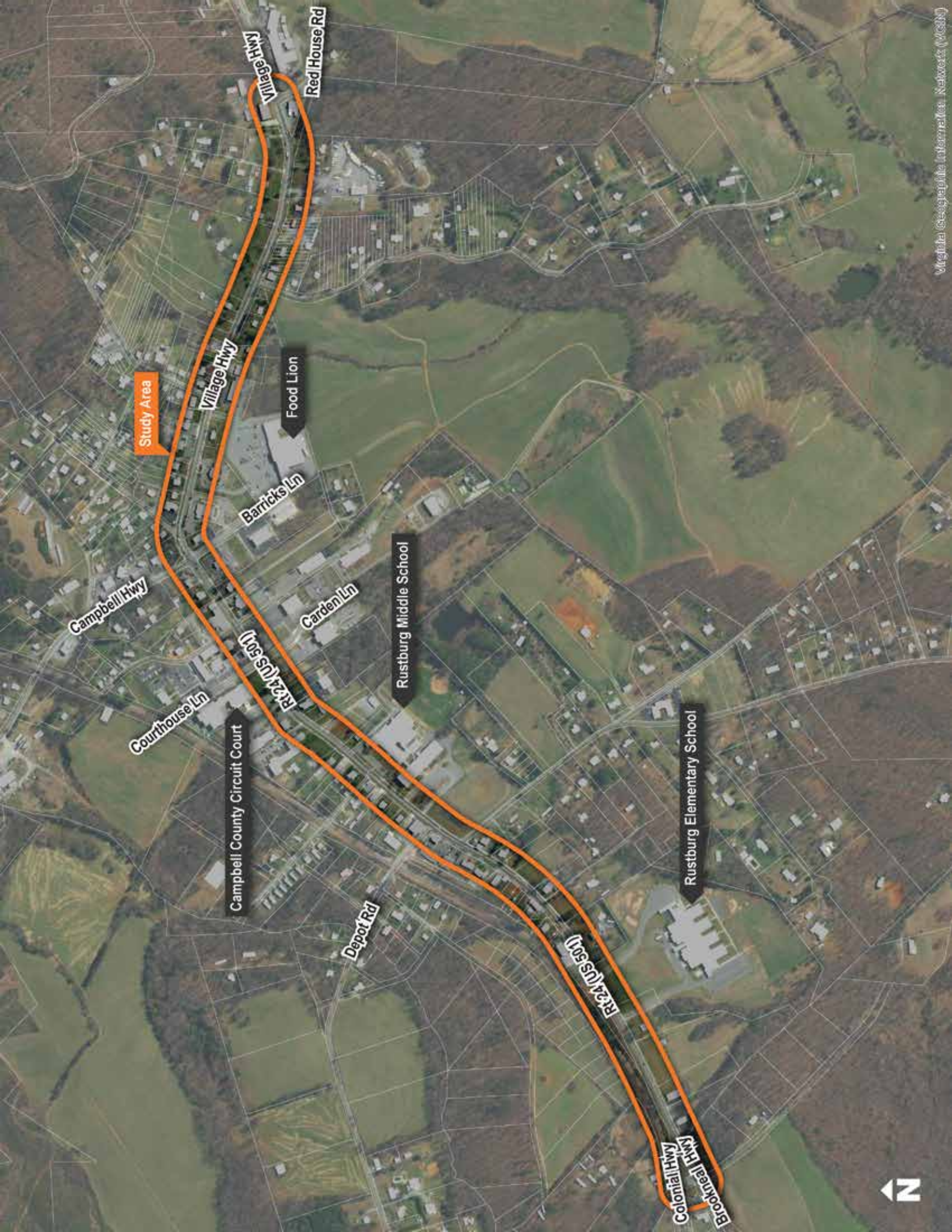
<https://www.cvtpo.org/plans-programs-studies/village-highway-study.html>

**Take the Survey**



**Visit the Website**





Study Area

Village Hwy

Red House Rd

Village Hwy

Food Lion

Barricks Ln

Rustburg Middle School

Garden Ln

Campbell Hwy

Campbell County Circuit Court

RR24 (US 50)

Courthouse Ln

Rustburg Elementary School

Depot Rd

RR24 (US 50)

Colonial Hwy  
Brookwell Hwy

