

Campbell County

Demographic Data



Department of Economic Development
Comprehensive Economic Development Strategies

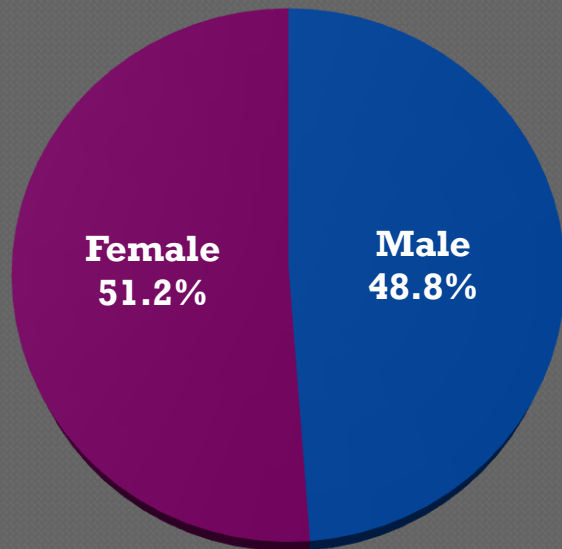
Overview

- ◉ Population
- ◉ Employment/Unemployment
- ◉ Wages/Income
- ◉ Education
- ◉ Agriculture
- ◉ Tourism

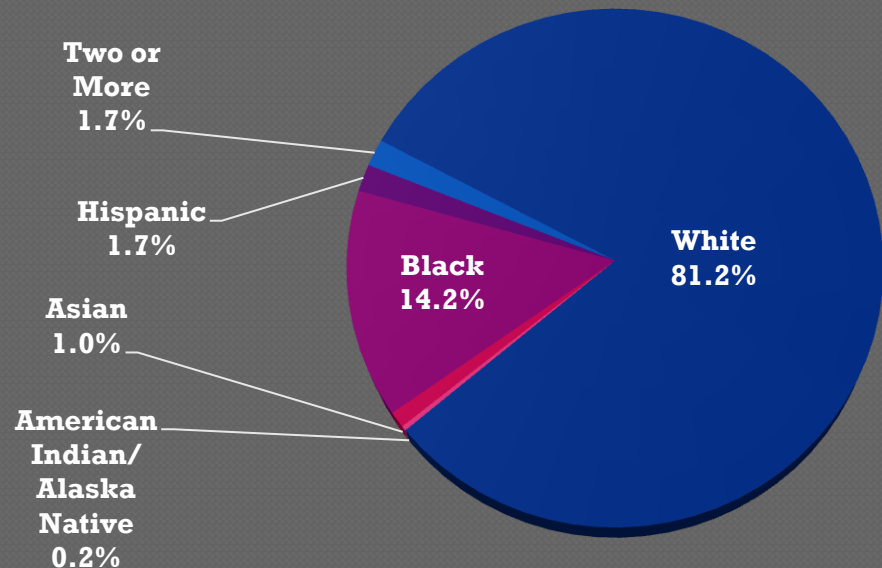


Gender and Race/Ethnicity

Gender Distribution (2009)



Race/Ethnicity (2010)



Median Age (2010)

| | |
|-----------------|------------|
| Campbell County | 41.0 Years |
| Virginia | 36.7 Years |

Population Trends

| Locality | 2000 | 2001 | 2002 | 2003 | 2004 | 2005 | 2006 | 2007 | 2008 | 2009 | 2010 |
|--------------------------|-----------|-----------|-----------|-----------|-----------|-----------|-----------|-----------|-----------|-----------|-----------|
| Amherst County | 31,822 | 31,973 | 31,756 | 31,755 | 31,721 | 31,871 | 31,991 | 32,134 | 32,449 | 32,482 | 32,353 |
| Appomattox County | 13,691 | 13,779 | 13,668 | 13,661 | 13,783 | 13,810 | 14,005 | 14,193 | 14,529 | 14,552 | 14,973 |
| Bedford County | 60,606 | 60,980 | 61,356 | 62,036 | 63,014 | 64,104 | 65,483 | 66,373 | 66,465 | 67,154 | 68,676 |
| Campbell County | 51,144 | 51,246 | 51,397 | 51,392 | 51,419 | 51,920 | 52,411 | 52,529 | 52,874 | 52,976 | 54,842 |
| Lynchburg City | 65,281 | 64,827 | 64,992 | 66,070 | 66,503 | 68,028 | 70,012 | 71,864 | 72,947 | 73,933 | 75,568 |
| Region 2000 | 228,954 | 229,120 | 229,461 | 231,157 | 232,694 | 235,972 | 240,148 | 243,383 | 245,597 | 247,411 | 252,634 |
| Virginia | 7,104,533 | 7,191,304 | 7,283,541 | 7,373,694 | 7,468,914 | 7,563,887 | 7,646,996 | 7,719,749 | 7,795,424 | 7,882,590 | 8,001,024 |
| | | | | | | | | | | | |
| Town of Altavista | 3,425 | 3,402 | 3,384 | 3,354 | 3,338 | 3,348 | 3,355 | 3,347 | 3,339 | 3,336 | 3,450 |
| Town of Brookneal | 1,259 | 1,253 | 1,249 | 1,240 | 1,235 | 1,240 | 1,244 | 1,242 | 1,240 | 1,239 | 1,112 |

Source: U.S. Census Bureau, July 2011

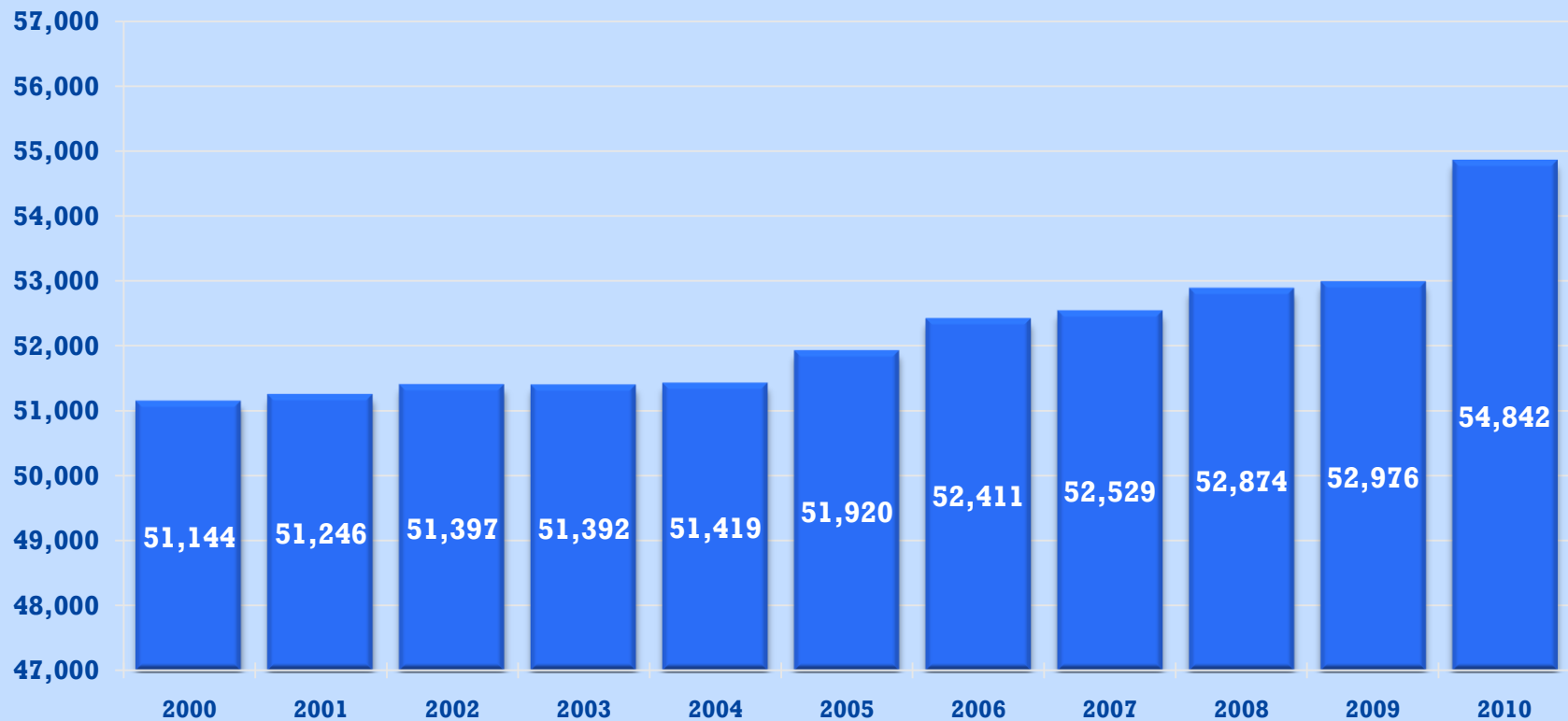
Percent Changes

| Locality | % Change in Population (2000 – 2010) |
|-------------------|---|
| Amherst County | 1.5% |
| Appomattox County | 9.4% |
| Bedford County | 13.3% |
| Campbell County | 7.2% |
| Lynchburg City | 15.8% |
| Region 2000 | 10.3% |
| Virginia | 12.6% |
| | |
| Town of Altavista | 0.7% |
| Town of Brookneal | -11.7% |



Population Trends

Campbell County Population Growth - 2000-2010



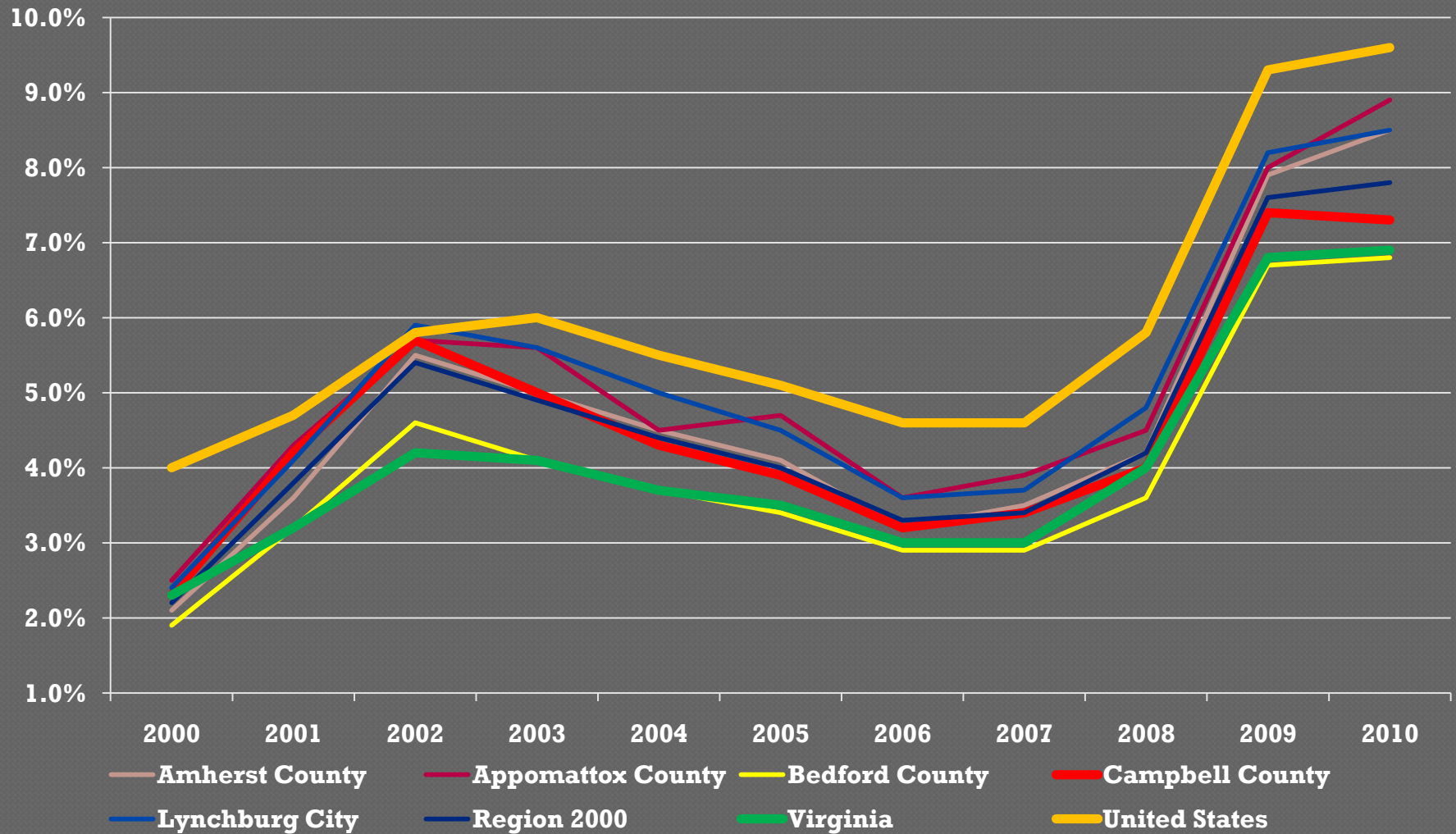
Source: U.S. Census Bureau, July 2011

Major Employers

| Organization | Product/Service | Estimated Employment |
|---|---------------------------------------|----------------------|
| Babcock and Wilcox Company | Industrial Machinery/Nuclear/Military | 1,500 – 2,499 |
| Campbell County Schools | Education | 1,000 – 1,499 |
| Abbott Laboratories | Pharmaceuticals | 300 – 599 |
| BGF Industries, Inc. | Fiberglass Fabric | 300 – 599 |
| Campbell County Government | Government | 300 – 599 |
| BAT Masonry Company, Inc. | Contractor | 100 – 299 |
| Georgia Pacific | Oriented Strand Board | 100 – 299 |
| Intersections, Inc. | Call Center | 100 – 299 |
| Moore's Electrical and Mechanical, Inc. | Contractor | 100 – 299 |
| Progress Printing Company | Commercial and Catalogue Printing | 100 – 299 |
| Schrader Bridgeport International, Inc. | Industrial and Automotive Products | 100 – 299 |
| The Timken Company | Tapered Roller Bearings | 100 – 299 |
| Banker Steel | Steel Fabricator | 50 – 99 |
| Consolidated Shoe Company, Inc. | Footwear | 50 – 99 |
| Graham Packaging | Plastic Blow Molding | 50 – 99 |
| Mid-Atlantic Printers | Commercial Printer | 50 – 99 |
| Charter of Lynchburg | Furniture | 20 – 49 |
| Sanfacon Virginia | Plastics/Food Services | 20 – 49 |

Source: Virginia Economic Development Partnership, May 2011

Regional Unemployment – 2000-2010



Campbell County Labor Force

| Year | Civilian Labor Force | Employed | Unemployed | Unemployment Rate |
|------|----------------------|----------|------------|-------------------|
| 2000 | 26,350 | 25,742 | 608 | 2.3% |
| 2001 | 26,026 | 24,922 | 1,104 | 4.2% |
| 2002 | 26,518 | 25,005 | 1,513 | 5.7% |
| 2003 | 26,512 | 25,192 | 1,320 | 5.0% |
| 2004 | 26,413 | 25,276 | 1,137 | 4.3% |
| 2005 | 26,845 | 25,792 | 1,053 | 3.9% |
| 2006 | 27,202 | 26,328 | 874 | 3.2% |
| 2007 | 27,335 | 26,400 | 935 | 3.4% |
| 2008 | 27,815 | 26,702 | 1,113 | 4.0% |
| 2009 | 27,547 | 25,521 | 2,026 | 7.4% |
| 2010 | 27,317 | 25,324 | 1,993 | 7.3% |

| 2011 Month | Unemployment Rate |
|------------|-------------------|
| January | 7.3% |
| February | 7.1% |
| March | 6.9% |
| April | 6.3% |
| May | 6.2% |

Source: Virginia Employment Commission, May 2011

Median Household Income

| Locality | 2003 | 2004 | 2005 | 2006 | 2007 | 2008 | 2009 | Percent Change 2003 - 2009 |
|--------------------------|----------|----------|----------|----------|----------|----------|----------|-------------------------------|
| Amherst County | \$37,349 | \$38,891 | \$40,673 | \$42,981 | \$43,890 | \$44,966 | \$42,117 | 11.3% |
| Appomattox County | \$36,939 | \$38,080 | \$39,199 | \$41,114 | \$41,089 | \$43,529 | \$42,354 | 12.8% |
| Bedford County | \$47,263 | \$48,518 | \$49,812 | \$50,772 | \$53,823 | \$54,715 | \$53,003 | 10.8% |
| Campbell County | \$38,606 | \$40,054 | \$40,230 | \$41,225 | \$43,641 | \$43,055 | \$44,983 | 14.2% |
| Lynchburg City | \$31,973 | \$32,997 | \$35,213 | \$36,314 | \$36,374 | \$39,440 | \$38,005 | 15.9% |
| Virginia | \$50,028 | \$51,103 | \$54,207 | \$56,297 | \$59,575 | \$61,210 | \$59,372 | 15.7% |

Source: Virginia Employment Commission, July 2011

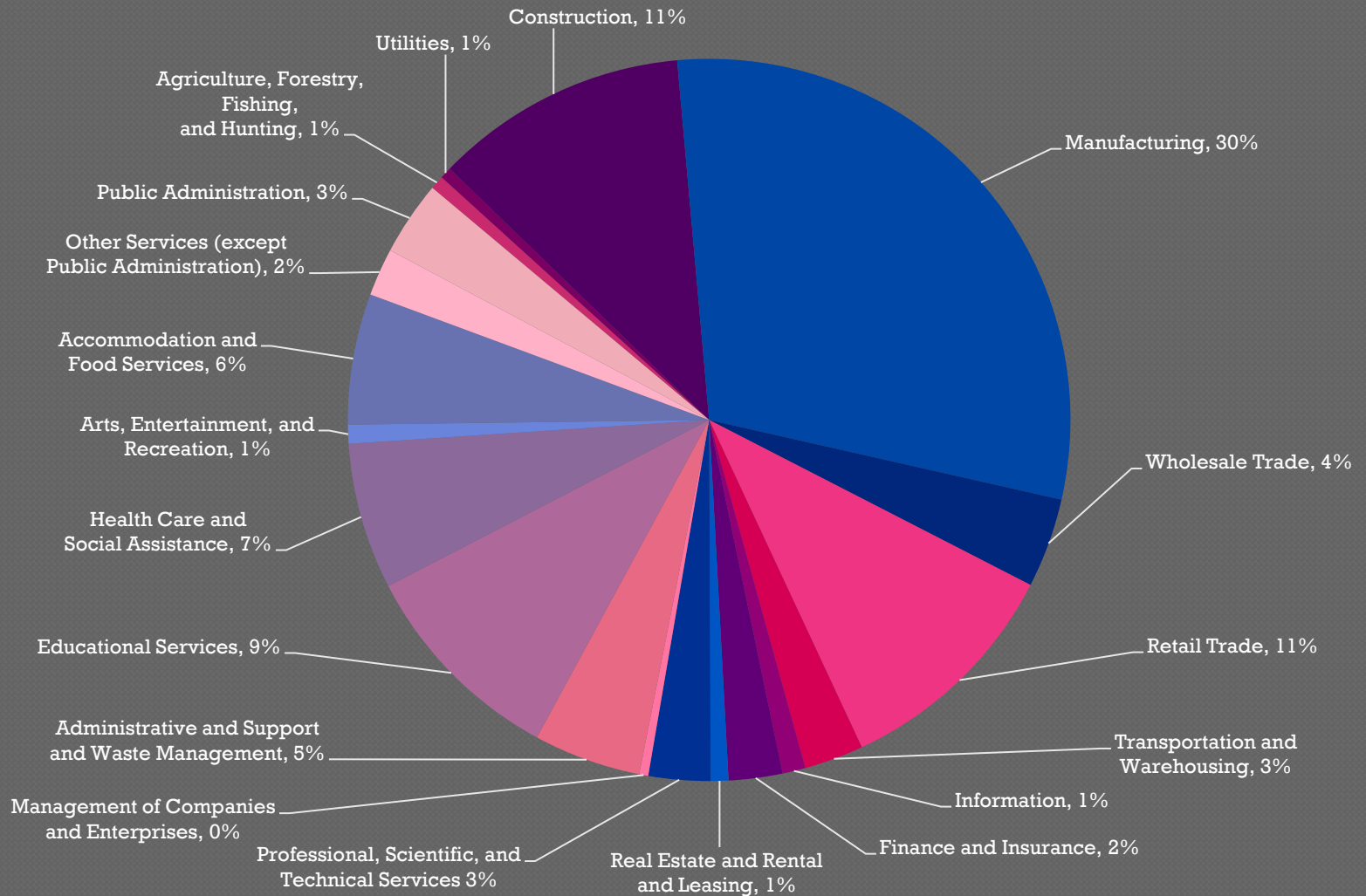


Average Weekly and Per-Hour Wages

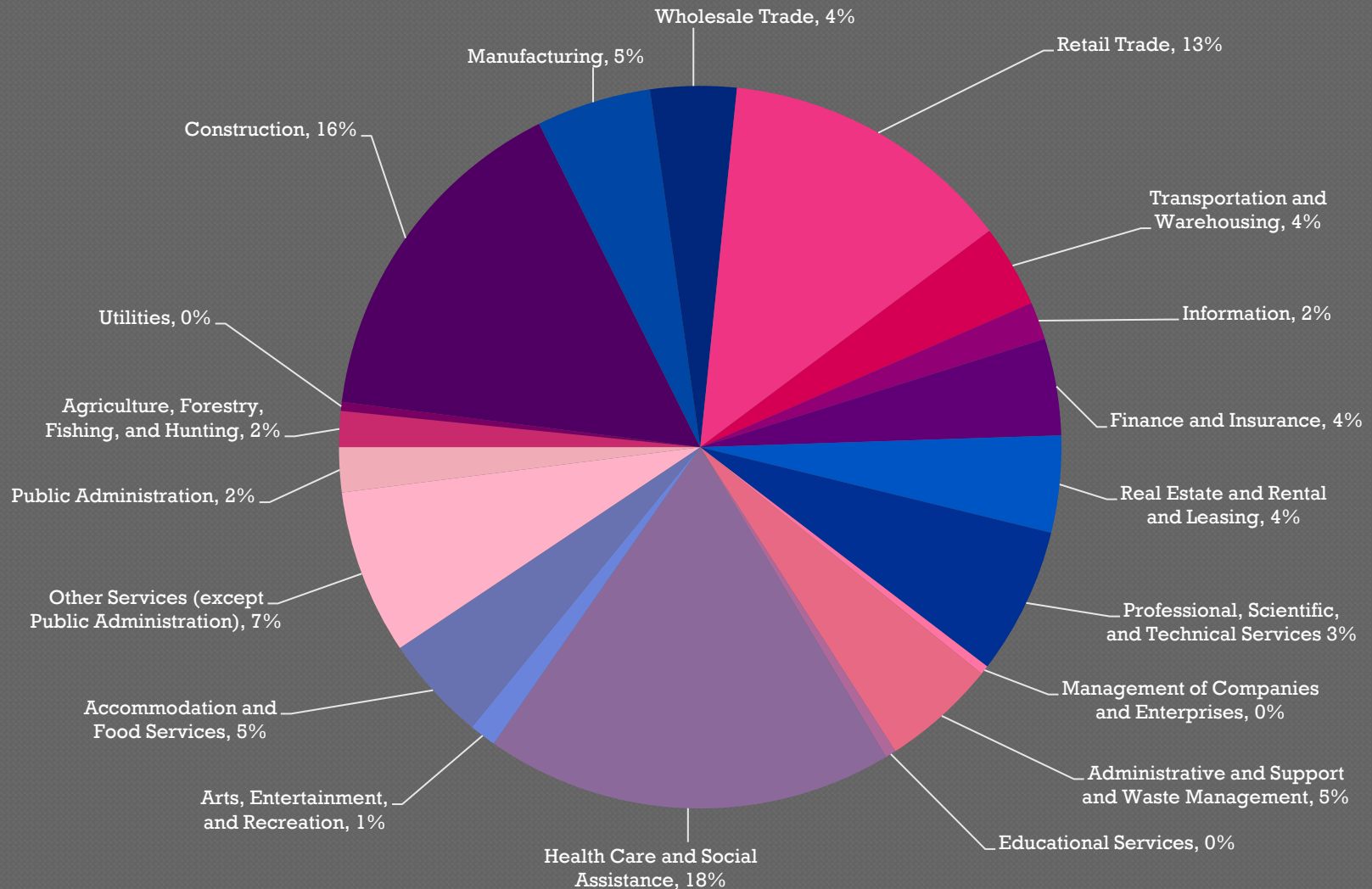
| Locality | Total Average Employment | Average Hourly Wage | Average Weekly Wage | Average Annual Wage |
|--------------------------|--------------------------|---------------------|---------------------|---------------------|
| Amherst County | 8,797 | \$17.25 | \$690 | \$35,880 |
| Appomattox County | 3,186 | \$13.83 | \$553 | \$28,756 |
| Bedford County | 15,613 | \$16.20 | \$648 | \$33,696 |
| Campbell County | 15,867 | \$19.58 | \$783 | \$40,716 |
| Lynchburg City | 51,383 | \$19.38 | \$775 | \$40,300 |
| Region 2000 | 98,123 | \$18.48 | \$739 | \$38,428 |
| Virginia | 3,574,421 | \$25.73 | \$1,029 | \$53,508 |

Source: Virginia Employment Commission, July 2011

Employment by Industry



Businesses by Industry



Education Statistics

| | Campbell County |
|---|-----------------|
| On-Time Graduation Rate (Class of 2010) | 79.9% |
| Percentage of Campbell County population age 25+ who are high school graduates. | 82.5% |
| Percentage of Campbell County population age 25+ who have earned a Bachelor's Degree or higher. | 16.2% |
| Elementary School Student/Teacher Ratio | 15:1 |
| Secondary School Student/Teacher Ratio | 9:1 |
| Per Pupil Expenditure | \$9,285.00 |
| High School Graduates Continuing Education | 76.9% |

Source: Virginia Economic Development Partnership, U.S. Census Bureau, July 2011



School Enrollment

| School | 2007 – 2008 | 2008 – 2009 | 2009 – 2010 | 2010 – 2011 | Percent Change 2007 - 2011 |
|----------------------------------|--------------|--------------|--------------|-------------------|-------------------------------|
| Altavista Elementary | 625 | 617 | 605 | 603 | -3.5% |
| Altavista High | 790 | 795 | 771 | 761 | -3.7% |
| Brookneal Elementary | 313 | 300 | 269 | 429 | 37.1% |
| Brookville High | 1,004 | 998 | 1,020 | 1,033 | 2.9% |
| Brookville Middle | 734 | 744 | 732 | 709 | -3.4% |
| Concord Elementary | 395 | 395 | 425 | 420 | 6.3% |
| Gladys Elementary | 208 | 200 | 209 | **Closed** | -100% |
| Leesville Road Elementary | 597 | 630 | 686 | 665 | 11.4% |
| Rustburg Elementary | 652 | 610 | 545 | 560 | -14.1% |
| Rustburg High | 932 | 910 | 932 | 947 | 1.6% |
| Rustburg Middle | 718 | 664 | 644 | 614 | -14.5% |
| Tomahawk Elementary | 724 | 724 | 622 | 628 | -13.3% |
| William Campbell High | 649 | 643 | 633 | 588 | -9.4% |
| Yellow Branch Elementary | 472 | 504 | 541 | 568 | 20.3% |
| Total: | 8,813 | 8,734 | 8,634 | 8,525 | -3.3% |

Source: Virginia Department of Education, July 2011

Local College Enrollment

| College | Enrollment |
|---|------------|
| Liberty University | 55,223* |
| Central Virginia Community College | 5,466 |
| Lynchburg College | 2,643 |
| Sweet Briar College | 759 |
| Randolph College | 525 |
| Virginia University of Lynchburg | 510 |

* Includes Distance Learning Program



Agriculture

| | 2002 | 2007 | % Change 2002 - 2007 |
|---|---------------|---------------|-------------------------|
| Total Number of Farms | 664 | 722 | 8.0% |
| Land in Farms | 138,716 Acres | 140,359 Acres | 1.2% |
| Average Size of Farm | 209 Acres | 194 Acres | -7.7% |
| Estimated Market Value of Land and Buildings | \$268,810,000 | \$470,765,000 | 42.9% |
| Average Market Value Per Acre | \$1,874 | \$3,354 | 44.1% |
| Total Sales | \$15,588,000 | \$25,345,000 | 38.5% |
| Total Farm Income (After Expenses) | \$2,206,000 | -\$459,000 | -580.6% |

Source: United States Department of Agriculture, July 2011



Tourism Impacts

| | 2005 | 2006 | 2007 | 2008 | 2009 | Percent Change |
|-----------------------------|--------------|--------------|--------------|--------------|--------------|----------------|
| Tourism Expenditures | \$29,505,422 | \$31,388,717 | \$32,930,575 | \$33,408,580 | \$33,129,635 | 10.9% |
| Payroll | \$6,051,424 | \$6,222,688 | \$6,240,519 | \$6,306,967 | \$6,615,140 | 8.5% |
| Employment | 381 | 381 | 381 | 377 | 394 | 3.3% |
| Sales Tax Receipts | \$1,393,012 | \$1,446,684 | \$1,485,793 | \$1,471,106 | \$1,558,964 | 10.6% |
| Local Tax Receipts | \$478,316 | \$503,863 | \$526,120 | \$538,818 | \$540,420 | 11.5% |

Source: Virginia Tourism Corporation, July 2011



Summary

- Population growth steady – accelerating in past 2 years.
- Diverse economy – weighs towards advanced manufacturing.
- Unemployment remains high – lower than region and national averages.
- Wages higher than region – lag the state.
- School enrollment dropping – education attainment levels below state averages.

Questions/Comments



Campbell County Department of Economic Development
www.campbellvirginia.com
(434) 592-9595