

# Seneca Commerce Park - Virtual Building Campbell County, Virginia

## BASIC SPECIFICATIONS

### BUILDING

SIZE.....59,600 SQ. FT.  
DIMENSIONS  
SHELL BUILDING..... 40,000 SQ. FT.  
OFFICE.....29,600 SQ. FT.  
SITE ACREAGE.....31.9 ACRES

### CONSTRUCTION

WALLS.....BRICK ON METAL  
STUDS & FRAME (OFFICE)  
METAL PANEL ON METAL FRAME  
FLOORS..... REINFORCED CONCRETE  
ROOF.....MEMBRANE & METAL  
CEILING HEIGHT.....26'+/-  
COLUMN SPACING.....50' X 50'  
DOCK DOORS.....(8) 9' X 10'  
SPRINKLER.....END USER SPECS  
HVAC.....END USER SPECS

### ZONING

I-H

### UTILITIES

POWER.....DOMINION POWER  
OVERHEAD OR UNDERGROUND  
EXTENTIONS AVAILABLE.  
(UTILITY WORK TO MEET USER NEEDS.)  
WATER.....CAMPBELL COUNTY  
UTILITIES & SERVICE AUTHORITY  
12" LINE ON SITE.  
SEWER.....ON SITE SEPTIC SYSTEM

### TELECOMMUNICATIONS

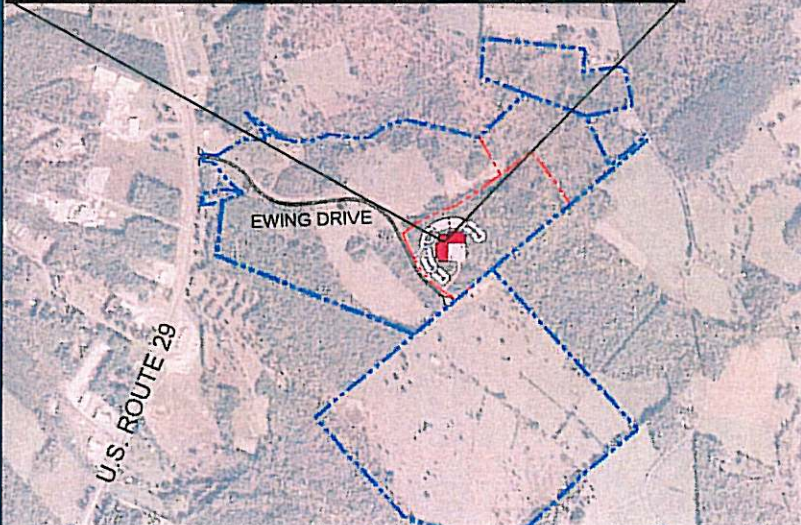
TELECOMMUNICATIONS AND  
FIBER OPTICS AVAILABLE.

### SOLID WASTE

CAMPBELL COUNTY LANDFILL,  
5 MILES NORTH.  
ACCEPTS INDUSTRIAL WASTE.

### TRANSPORTATION

DIRECT ACCESS TO U.S. ROUTE 29  
LYNCHBURG REGIONAL AIRPORT,  
8 MILES NORTH.



### FOR MORE INFORMATION CONTACT:

**Mike Davidson**  
Campbell County Economic  
Development Department  
PO Box 100  
Rustburg, VA 24588  
Phone: 434-592-9595  
Fax: 434-332-9693  
[jmdavidson@co.campbell.va.us](mailto:jmdavidson@co.campbell.va.us)  
[www.co.campbell.va.us](http://www.co.campbell.va.us)

DAA Project No. B07137-01



**Draper Aden Associates**  
Engineering • Surveying • Environmental Services

